

# FLEXIBLE FLOW

Furniture echoes architectural elements; places of refuge get playful, and more of the year's top library design trends  
By Emily Puckett Rodgers

**It's all about flow.** Rooms within rooms, nooks, delightful retreats for all ages are designed to seamlessly transition spaces from one function to another in this year's round up of library renovations and new buildings. While we still see the subdued natural color palettes of last year's trendsetters, color continues to play a meaningful role in these libraries. Color offers connection to the surrounding landscape, signals a meaningful place to rest or congregate, or invites the community into the buildings. 2022's libraries are joyful celebrations of their communities, reflecting whimsy and delight.

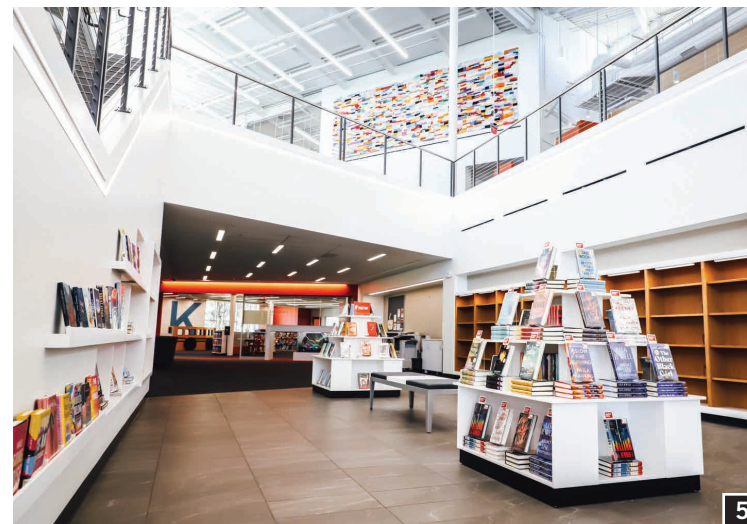
## CHOICE BUT NOT CHAOS

Furniture selections across these libraries offer community members plenty of choice. Seating is available in soft, hard, task, and communal options. Tables are large and small. Rather than using different styles or designers for each section of the library, furniture pieces have the same underlying structure but are finished in a variety of fabric choices or other options, providing a cohesive visual and sensory experience, and facilitating the flow of one space into the next. At the **Salem Public Library**, OR, for example, warm wood-wrapped chairs offer functional seating in both family areas and in sun-filled reading nooks, finished with different colors in each space. In the renovated **David Mullins Library**, AR, design firm Perry Dean Rogers repeats furniture options that offer cohesion across large floor plates, setting up spaces for students to lounge, focus, and engage in solo or group work.

## A SHELF APART

Shelving has become much more responsive and playful in this year's libraries, especially in children's areas. Incorporating lighting and graphic or highly finished end caps, these

**EMILY PUCKETT RODGERS** IS INTERIM ASSOCIATE UNIVERSITY LIBRARIAN FOR OPERATIONS AT THE UNIVERSITY OF MICHIGAN, ANN ARBOR



## Something to See

Flexible furnishings that echo architectural details, places of refuge, outdoor rooms, and color schemes that let nature take the spotlight top the trends in this year's new academic and public library buildings. **1.** Desert Hot Springs Library, CA. **2.** Atlanta Central Library, GA. **3.** Peoria Main Library, AZ. **4.** Linda Sokol Francis Brookfield Library, Brookfield, IL. **5.** Karl Road Branch, Columbus Metropolitan Library, OH. **6.** Shaker Heights Public Library, OH.

**CREDITS** **1.** Cannon Design, architect; photo ©2021 Stephen Whalen Photography. **2.** Cooper Carry; Moody Nolan, architects; photo ©2021 Jonathan Hillyer. **3.** DFDG Architecture, architect; photo ©2022 Landscape Structures Inc. **4.** Product Architecture + Design, architect; Product Architecture + Design, photo. **5.** Moody Nolan, architect; photo courtesy Columbus Metropolitan Library. **6.** Bialosky Cleveland, architect; photo ©2021 Christian Phillips Photography.

shelves are configured in different heights to offer varying experiences. Some, like the **Roslindale Branch** of the Boston Public Library even offer a labyrinth-like experience for community members to wander through. At the newly built 22,000 square foot **Norcross Library**, GA, custom display shelves are mounted into a brick wall, celebrating new local newspapers and offering integrated seating. At the **North Branch** of the Clinton Macomb Public Library, MI, curved custom shelving offers seating and materials mimic the oculus at the center of the room. These shelves are not simply in the space but also of the space.

## DELIGHTFUL RESPITE

While previous designs have incorporated rooms within rooms, nooks, or small play areas, 2022's libraries feature bold, whimsical, and delightful spaces that are sure to ignite the imaginations of community members. At the **Adams St. Branch** of the Brooklyn Public Library, a bold and futuristic cave offers a magenta-hued children's area tucked into the floor. At the **Conyers-Rockdale Library System** in Georgia, a variety of different spaces and experiences are tucked together to offer a greenscreen performance space, a lounge area, computer stations, and a brainstorming area. Designed by Morris Berg, the **Parr Student Success Center and Hagemeyer**

→ CONTINUED ON P. 32

**LJ's 2022 Year in Architecture Survey** This year *LJ* is reporting on 12 academic library construction and renovation projects completed between July 1, 2021, and June 30, 2022, three of which were completely new buildings with an average total project cost (including construction, furniture, site costs, etc.) of \$80 million covering an average of 73,000 square feet. Academic library renovations/additions averaged \$12 million for 66,000 average square feet of added or remodeled space.

We received forms reporting on 75 public library projects—50 renovation/addition projects and 25 completely new buildings. New public library buildings averaged 25,000 square feet with an average total project cost of \$18 million. Renovations/additions in public libraries averaged \$9 million for 34,000 average square feet of space. Funding for public library construction projects came primarily through local government and bond funds (85 percent) or gifts (11 percent). State and federal government accounted for less than five percent of total funding.

**ACADEMIC NEW BUILDINGS**

INSTITUTION	PROJECT COST	CONSTRUCTION COST	GROSS SQ. FT.	SQ. FT. COST	FURNITURE/EQUIP. COST	ARCHITECT
<b>Solano College Library &amp; Learning Resource Center</b> , Solano Community College District, Fairfield, CA	\$43,800,000	\$33,302,345	59,252	\$562.05	\$2,700,000	Noll & Tam Architects
<b>Hagemeyer Library</b> , Central Piedmont Community College, Charlotte, NC	113,519,384	81,823,590	66,321	1233.75	4,270,858	Moody Nolan; Morris Berg Architects
<b>Chalmers Library</b> , Kenyon College, Gambier, OH	81,200,000	62,500,000	93,090	671.39	6,800,000	GUND Partnership

**ADDITIONS AND RENOVATIONS**

INSTITUTION	PROJECT COST	CONSTRUCTION COST	GROSS SQ. FT.	SQ. FT. COST	FURNITURE/EQUIP. COST	ARCHITECT
<b>Main Library</b> , University of Arizona, Tucson, AZ	\$8,000,000	\$7,000,000	60,000	\$116.67	\$1,050,000	The Miller Hull Partnership; Poster Mirto McDonald
<b>David W. Mullins Library</b> , University of Arkansas, Fayetteville, AR	25,000,000	18,989,599	120,560	157.51	2,754,494	Perry Dean Rogers; Miller Boskus Lack Architects
<b>Monroe F. Swiley, Jr. Graduate and Professional Library</b> , Mercer University, Atlanta, GA	2,113,500	1,878,500	62,000	30.30	235,000	Emery & Associates
<b>Lilly Library</b> , Indiana University, Bloomington, IN	13,000,000	8,000,000	52,285	153.01	n/a	TowerPinkster
<b>Hayden Library</b> , Massachusetts Institute of Technology, Cambridge, MA	n/a	n/a	148,000	n/a	n/a	Kennedy and Violich Architecture
<b>Joseph Anderson Cook Memorial Library</b> , The University of Southern Mississippi, Hattiesburg, MS	12,100,000	n/a	n/a	n/a	n/a	Wier Boerner Allin Architecture
<b>Leonard Lief Library</b> , Lehman College, Bronx, NY	20,002,000	16,160,000	54,426	296.92	1,637,000	H2M architects + engineers
<b>Syracuse University Libraries' Facility</b> , Syracuse University, Syracuse, NY	5,700,000	4,700,000	15,000	313.33	1,000,000	VIP Architectural Associates
<b>Biotech Commons</b> , University of Pennsylvania, Philadelphia, PA	n/a	8,000,000	18,200	439.56	750,000	Voith & Mactavish Architects LLP



**DESIGN TREND**

**Choice but not Chaos**

Across many library spaces and settings, furnishings, finishes, and fixtures are tightly coordinated, both in shape and in style, to create a cohesive, seamless experience between more public and more private areas in the library.

**1. North Branch**, Clinton Macomb Public Library, Macomb, MI. An elegant oculus ceiling is reflected in curved light blond wood shelving with room for both collections and displays, customized further with built-in seating.

**2. Hyattsville Branch**, Prince George's County Memorial Library System, MD. Undulating wood banners serve to anchor the drop ceiling above the check-out and returns desk while, high above, metal ribbons float between a warm wood-paneled ceiling and large, suspended circular LED lights.

**3. St. Joseph County Public Library**, South Bend, IN. An octagon repeats throughout a meeting room from the skylight through to the suspended LED lighting and tables below.

**4. David W. Mullins Library**, University of Arkansas, Fayetteville, AR. Muted, matched warm-toned chairs and couches offer an array of comfortable seating, each balanced with suspended warm globe lights throughout an otherwise large open floor.

**5. Salem Public Library**, OR. Poufs, flowing couches, and brightly colored armchairs anchor an open, visible floor. Many of the same furnishings, finished in a variety of colors, provide cohesion throughout the floors, spaces, and levels of the library.

**CREDITS** 1. Quinn Evans, architect; Justin Macanochie, photo. 2. Grimm + Parker, architect; ©Sam Kittner, photo. 3. Arkos Design and Robert A.M. Stern Architects, architect; ©MILLER + MILLER Architectural Photography, photo. 4. Perry Dean Rogers, Miller Boskus Lack Architects, architect; Perry Dean Rogers, photo. 5. Hacker, architect; Lara Swimmer, photo.

→ CONTINUED FROM P. 28

**Library** at Central Piedmont Community College, NC, features a statement staircase leading to breakout areas with technology, comfortable seating, and large poufs for collaborating.

**ICONIC ENTRANCES, TRANSPARENT FLOORS**

These libraries offer their communities grand entrances by creating inspiring, inviting, and transparent lobbies and entryways. At the fully accessible **Library of Accessible Media for Pennsylvanians (LAMP)**, PA, a warm red anchors the entrance pillars, offset by bright LED lighting. Housed in a former Studebaker Factory by GBBN, the same hue is carried into the main lobby of the space, visible from the out-

side through large windows with the word “LIBRARY” emblazoned on the wall in led lighted braille letters.

At the **Salem Public Library**, OR, glass or partial walls offer visibility between the second and first floors. Community members can stay visually connected across floors while occupying age- or activity-appropriate spaces. At the **Chalmers Library** at Kenyon College, OH, wood slats clad the interior of a glassed-in courtyard that is anchored by balconies within the space, leading to an urban city-like feel.

**CREATING CONNECTION**

Some illustrate how renovated historic buildings can retain traditional facades while the interior can fully be modernized and contemporary. For example, the addition to the **Concord Free Public Library**, MA retains the residential vernacular design of the original building but offers a rich, warm wood interior throughout. At the **Flint Public Library**, MI, the interior offers glass and soft hued textures and metals. While the exterior envelope didn't change substantially, new glass windows, thoughtful curtain enclosures, and the addition of a comfortable raised greenspace at the entrance invite the city's residents to enjoy the collection and spaces.

These libraries combine design elements that connect communities, including the visual transparency between and across floors, with intimate and inspiring spaces for people to connect, learn together, explore, or create. Organic and dynamic shapes emerge out of color and pattern but also in configuration, with creative shelving, a variety of spaces and sizes, and anchored color. Our 2022 libraries bring joy into their communities alongside programming, resources, spaces in which to create and collaborate. ■

**PUBLIC NEW BUILDINGS**

COMMUNITY	POP IN K	CODE	PROJECT COST	CONSTR. COST	GROSS SQ. FT.	SQ. FT. COST	FURNITURE/EQUIP. COST	ARCHITECT
<b>ARIZONA</b>								
Sahuarita	31	B	\$8,900,000	\$5,657,759	17,700	\$319.65	\$620,000	Line and Space, LLC
<b>CALIFORNIA</b>								
Atherton	12	B	19,300,000	n/a	11,460	n/a	n/a	WRNS Studio
Brisbane	5	B	9,600,000	n/a	7,670	n/a	n/a	Siegel & Strain Architects; Karin Payson architecture + design
Desert Hot Springs	30	B	25,914,500	22,198,050	15,000	1,479.87	1,250,000	Cannon Design
Menifee	93	B	34,552,666	29,597,400	20,000	1,479.87	1,666,666	Cannon Design
Winchester	40	B	43,190,833	36,996,750	25,000	1,479.87	2,083,333	Cannon Design
<b>FLORIDA</b>								
Marathon	8	B	9,588,954	7,994,929	14,000	571.07	1,068,190	Synalovski Romanik Saye, LLC.
<b>GEORGIA</b>								
Norcross	65	B	n/a	12,321,000	22,000	560.05	n/a	CAS Architecture
<b>ILLINOIS</b>								
Brookfield	19	M	11,000,000	8,500,000	21,000	404.76	645,000	Product Architecture + Design
<b>INDIANA</b>								
Whiteland	25	B	8,494,317	6,598,059	17,127	385.24	342,594	HBM Architects
<b>MARYLAND</b>								
Hyattsville	171	B	32,644,628	28,581,288	40,000	714.53	1,721,420	Grimm + Parker Architects
<b>MASSACHUSETTS</b>								
Littleton	11	M	16,470,000	12,206,461	24,000	508.60	548,000	Johnson Roberts Associates
Medford	59	M	31,200,000	20,400,000	44,825	455.10	2,044,000	Schwartz/Silver Architects
<b>MICHIGAN</b>								
Macomb	35	B	19,475,000	15,840,000	28,000	565.71	1,663,000	Quinn Evans Architects
<b>MISSOURI</b>								
St. Louis	n/a	S	29,700,000	17,200,000	75,093	229.05	2,600,000	Lamar Johnson Collaborative
<b>NEW YORK</b>								
Brooklyn	20	B	7,175,673	5,412,639	6,500	832.71	312,000	WORKac
Staten Island	17	B	17,250,000	13,500,000	10,000	1,350.00	450,000	ikon.5 architects
<b>OHIO</b>								
Bay Village	6	B	1,084,966	8,909,278	17,000	524.08	558,662	HBM Architects
Columbus	66	B	18,112,721	14,006,563	41,147	340.40	825,420	Moody Nolan
Dayton	36	B	15,550,000	10,680,000	26,617	401.25	1,210,000	LWC Inc.
<b>TENNESSEE</b>								
Martin	15	M	11,960,000	n/a	38,000	n/a	n/a	TLM Associates
<b>TEXAS</b>								
Pearland	150	B	19,820,000	16,202,826	39,000	415.46	1,107,352	PGAL
<b>VERMONT</b>								
South Burlington	20	M	14,319,828	11,442,597	27,500	416.09	701,351	Wiemann Lamphere Architects; RATIO
<b>WASHINGTON</b>								
Spokane	200	B	7,729,350	5,179,283	12,500	414.34	535,460	Integrus Architecture
Spokane	200	O	8,444,101	6,642,405	13,700	484.85	549,174	Integrus Architecture

**Symbol Code:** B—Branch Library; BS—Branch & System Headquarters; M—Main Library; MS—Main & System Headquarters; S—System Headquarters; O—Combined Use Space; n/a—not available



1



**DESIGN TREND**

**A Shelf Apart**

Shelving design continues to evolve to support the visual narrative and personality of library spaces, from whimsical interactive shelves with cubby holes and twists and turns to shelves that offer integrated seating, display, and collections.



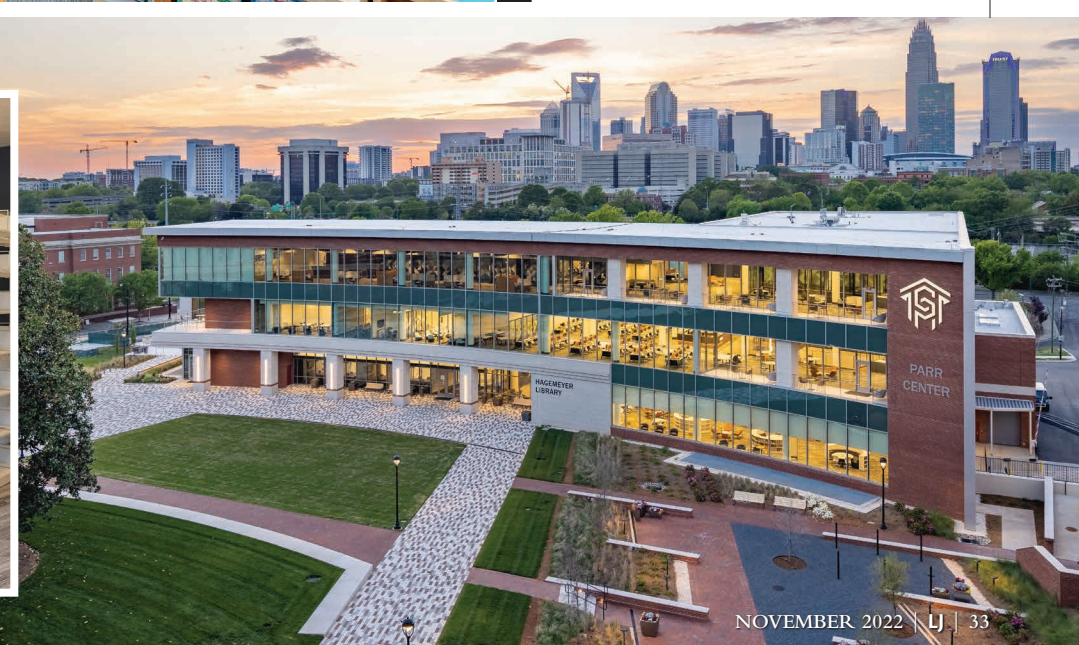
2

**1. Roslindale Branch**, Boston Public Library, MA. A maze-like configuration of double-sided shelving invites exploration and curiosity while still being low enough to see over.

**2. Perry Sippo Branch**, Stark County District Library, Canton, OH. Shelving variety, from height to display, both anchors and creates zones of activity while also encouraging community members to move through the space.

**3. Hagemeyer Library**, Central Piedmont Community College, Charlotte, NC. Graphic endcaps on both tall and low shelving feature photos of alumni, dating back to 1963, celebrating the history of the community college.

**CREDITS 1.** Leers Weinzapfel Associates, architect; Jane Messenger, photos. **2.** HBM Architects, architect; photo ©2022 Hanson Photographic. **3.** Moody Nolan, Morris Berg Architects, architect; ©Central Piedmont Community College 2021, photos.



**PUBLIC ADDITIONS AND RENOVATIONS**

COMMUNITY	POP IN K	CODE	PROJECT COST	CONSTR. COST	GROSS SQ. FT.	SQ. FT. COST	FURNITURE/EQUIP. COST	ARCHITECT
<b>ARIZONA</b>								
Mesa	430	MS	\$1,290,860	\$981,801	12,285	\$79.92	\$132,000	EMC2
Peoria	191	M	2,852,363	2,397,365	7,324	327.33	100,000	DFDG Architecture
<b>FLORIDA</b>								
Jacksonville	204	B	1,805,695	1,237,656	10,763	114.99	392,807	VRL Architects Inc.; Margaret Sullivan Studio
Tavares	17	M	983,931	720,137	2,594	277.62	97,511	DLR Group
<b>GEORGIA</b>								
Atlanta	1,105	MS	57,042,724	41,725,766	170,000	245.45	5,847,688	Cooper Carry; Moody Nolan
Conyers	91	MS	978,087	715,899	47,248	15.15	n/a	McMillan Pazdan Smith Architecture
<b>ILLINOIS</b>								
Arlington Heights	77	B	1,659,929	934,350	8,000	116.79	165,325	Williams Architects
Bedford Park	1	M	968,583	777,962	6,797	114.46	104,181	StudioGC architecture + interiors
Chicago Ridge	14	M	1,359,000	1,050,000	15,000	70.00	240,000	Product Architecture + Design
East Moline	22	M	8,295,095	4,651,757	21,684	214.52	686,320	HGA, Inc.
Prospect Heights	14	M	5,400,000	4,500,000	26,000	173.08	550,000	Product Architecture + Design
Riverside	9	M	1,162,500	760,500	8,270	91.96	260,600	StudioGC architecture + interiors
Wood Dale	13	M	7,274,434	6,139,323	26,118	235.06	288,346	StudioGC architecture + interiors
<b>INDIANA</b>								
Fort Wayne	35	B	2,779,778	2,630,877	12,600	208.80	148,901	MKM architecture + design
South Bend	168	MS	39,135,756	32,710,495	140,457	232.89	1,191,669	Robert. A. M. Stern Architects; Arkos Design, Inc.
<b>MARYLAND</b>								
Cooksville	345	B	1,200,000	687,750	30,000	22.93	327,961	Quinn Evans Architects
<b>MASSACHUSETTS</b>								
Boston	33	B	8,100,000	7,800,000	14,855	525.08	300,000	Leers Weinzapfel Associates
Concord	19	M	10,750,000	8,350,000	15,500	538.71	550,000	Johnson Roberts Associates
Grafton	20	M	16,600,000	13,300,000	25,212	527.53	1,012,346	Drumrey Rosane Anderson, Inc
Sandwich	21	M	3,524,937	2,980,804	17,700	168.41	293,274	studioMLA Architects; David L. King Architects
Somerville	79	B						designLAB architects
Wellesley	29	M	2,400,000	1,600,000	25,000	64.00	627,000	Johnson Roberts Associates
Worcester	185	M	13,000,000	11,423,500	161,000	70.95	342,000	LLB Architects
<b>MICHIGAN</b>								
Flint	81	M	28,000,000	3,000,000	91,250	32.88	3,000,000	OPN Architects
<b>NEW YORK</b>								
Blue Point	14	M	18,399,540	12,940,302	28,531	453.55	989,819	BBS Architects, Landscape Architects + Engineers
Bronx	80	B	3,671,000	3,365,000	4,200	801.19	n/a	Belmont Freeman Architects
Brooklyn	27	B	23,881,970	19,401,613	26,620	728.84	513,970	Gensler; Marvel Architects
Guilderland	36	M	8,849,592	5,739,364	33,360	172.04	1,483,473	Butler Rowland Mays Architects, LLP
<b>NORTH CAROLINA</b>								
Hickory	43	MS	1,371,089	1,140,812	5,660	201.56	150,000	McMillan Pazdan Smith
<b>OHIO</b>								
Canton	8	B	856,954	670,354	5,000	134.07	101,800	HBM Architects
Canton	46	B	1,332,994	1,021,273	9,400	108.65	182,530	HBM Architects
Cincinnati	19	B	3,900,000	3,100,000	24,589	126.07	421,000	GBBN
Columbus	45	B	12,919,042	9,506,058	32,252	294.74	694,347	Gresham Smith
East Canton	8	B	661,630	511,471	3,600	142.08	75,861	HBM Architects
Lakewood	51	B	2,662,611	2,178,990	9,134	238.56	120,923	HBM Architects
Shaker Heights	31	M	10,904,275	8,598,953	65,000	132.29	1,023,533	Bialosky Cleveland
Youngstown	227	M	28,283,615	23,721,130	90,085	263.32	1,745,350	Bostwick Design Partnership
<b>OREGON</b>								
Salem	167	MS	19,860,000	18,500,000	96,000	192.71	n/a	Hacker - Architecture & Interior Design
<b>PENNSYLVANIA</b>								
Hellam	12	B	2,448,199	2,168,441	8,800	246.41	120,000	Warehaus

**Symbol Code:** B—Branch Library; BS—Branch & System Headquarters; M—Main Library; MS—Main & System Headquarters; S—System Headquarters; O—Combined Use Space; n/a—not available



**DESIGN TREND**  
**Delightful Respite**  
 While peaceful nooks for concentrating, enjoying the scenery, or getting work done are now standards for library design, these libraries feature unique and inspiring spaces within spaces that create a whole new experience within the library for their communities.

**1. Deer Park Branch, Cincinnati and Hamilton County Public Library, Cincinnati, OH.** Bold blue carpeting, walls, and furniture highlight two multi-purpose rooms within the interior floor of the Deer Park Branch.

**2. Adam Street Branch, Brooklyn Public Library, NY.** A futuristic, funky children's space creates a window into the rest of the library and a unique area for children's imaginations to run free with bright orange carpeting and rich wood paneling.

**3. Flint Public Library, MI.** Floating glassed-in rooms suspend above the main stairwell, offering a destination within the library in which to work that stays connected to the interior and the exterior of the building.

**4. Conyers-Rockdale Library System, Conyers, GA.** Layers of open space, designated as distinct by suspended acoustic ceiling panels, furniture, and color, offer a variety of options for activities that can take place side-by-side.

**5. Norcross Library, Gwinnett Public Library, Norcross, GA.** Highlighted in blue paint, carpeting, and furniture, three booths with built-in power stand out as a landing spot for individuals or pairs.

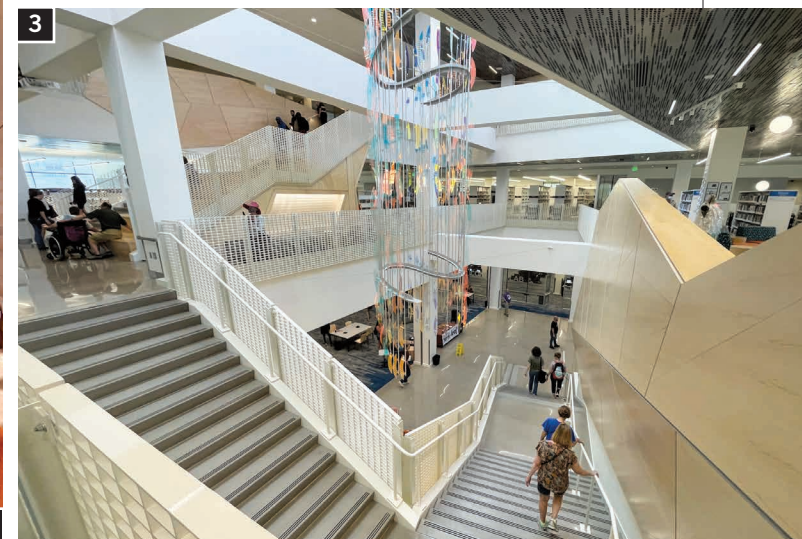
**CREDITS 1.** GBBN, architect; Ryan Kurtz, photo. **2.** HBM Architects, architect; Gregg Richards, photo. **3.** OPN Architects, architect; ©OPN Architects, Inc., photo. **4.** McMillan Pazdan Smith Architecture, architect; photo ©2021 Firewater Photography. **5.** CAS Architecture, architect; Gary Gomez Photography, photo.



**PUBLIC ADDITIONS AND RENOVATIONS (CONTINUED)**

COMMUNITY	POP IN K	CODE	PROJECT COST	CONSTR. COST	GROSS SQ. FT.	SQ. FT. COST	FURNITURE/EQUIP. COST	ARCHITECT
<b>PENNSYLVANIA (CONTINUED)</b>								
Lewisburg	37	MS	\$1,338,428	\$1,062,415	16,000	\$66.40	\$196,548	JR Keller LLC Creative Partnerships; Vitetta
Pittsburgh	15	B	2,650,700	2,110,500	11,600	181.94	17,600	GBBN
<b>SOUTH CAROLINA</b>								
Charleston	54	B	2,849,000	1,933,000	14,000	138.07	4,888,000	McMillan Pazdan Smith Architecture
Johns Island	25	B	2,766,000	1,743,000	15,950	109.28	472,000	McMillan Pazdan Smith Architecture
Lancaster	9	MS	5,746,007	4,454,799	20,390	218.48	346,500	McMillan Pazdan Smith Architecture
North Charleston	146	B	2,945,000	1,931,000	14,000	137.93	457,000	McMillan Pazdan Smith Architecture
<b>WASHINGTON</b>								
Spokane	200	B	11,150,000	10,250,000	30,800	332.79	900,000	Group 4 Architecture, Research + Planning, Inc.; Integrus Architecture
Spokane	200	MS	28,020,000	23,000,000	117,000	196.58	2,320,000	Group 4 Architecture, Research + Planning, Inc.; Integrus Architecture
<b>WEST VIRGINIA</b>								
Charleston	181	MS	32,397,874	25,160,776	80,000	314.51	1,325,852	HBM Architects; Silling Architects
<b>WISCONSIN</b>								
Lake Geneva	8	M	1,010,176	874,992	4,379	199.82	156,288	FEH Design
Watertown	30	M	10,000,000	6,800,000	41,500	163.86	972,500	StudioGC architecture + interiors

**Symbol Code:** B—Branch Library; BS—Branch & System Headquarters; M—Main Library; MS—Main & System Headquarters; S—System Headquarters; O—Combined Use Space; n/a—not available



**DESIGN TREND**  
**Iconic Entrances and Transparent Floors**

You have arrived. This year's libraries emphasize entrances by visually drawing community members into and through their doors with light, color, height, and plenty of glass or openings throughout their buildings so people can find where they want to go.

**1. Hayden Library,** Massachusetts Institute of Technology, Cambridge, MA. Soft geometric shapes pull the eye from the main floor up through to the suspended stairwell of the upper floors. Warm grey felted sound baffling anchors the shape of the stairs to provide cohesion.

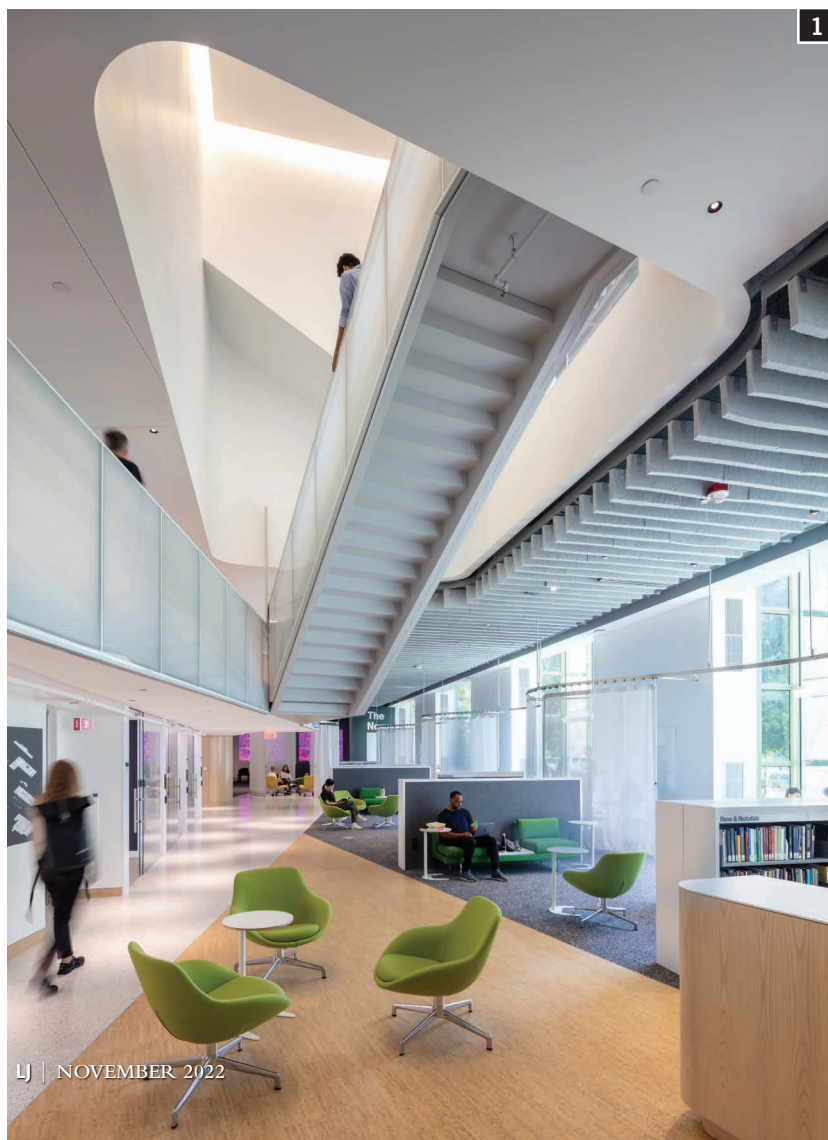
**2. Chalmers Library,** Kenyon College, Gambler, OH. Double-height windows look both outward and inward, offering visual connectivity between all the spaces, including an interior courtyard housed within a curved glass ceiling.

**3. Central Library,** Spokane Public Library, WA. Mirrored ceiling tiles reflect activity throughout the main stairwell, featuring a lithe and iridescent art piece that spans three floors.

**4. Library of Accessible Media for Pennsylvanians (LAMP),** Carnegie Library of Pittsburgh, PA. Bold, illuminated red tile and a wood-slatted awning anchors the entrance to LAMP. The same color is repeated in the interior of the first floor, encouraging movement into and through the building.

**5. Liberty Park Library,** Spokane Public Library, WA. Breaking from the angular framing of windows and a wide awning, and the vertical cladding, Liberty Park's entryway is moored by a circular orange room that features a meeting area and seating as you walk into the building.

**CREDITS** **1.** Kennedy and Violic Architecture, architect; John Horner, photo. **2.** GUND Partnership, architect; ©James D. DeCamp, photo. **3.** Group 4 Architecture, Research + Planning, Inc.; Integrus Architecture, architect; Aileen Allen, photo. **4.** GBBN, architect; photos ©2022 Ed Massery Photography. **5.** Integrus Architecture, architect; photo ©2022 Lara Swimmer.



## ARCHITECTS

**A** **Arkos Design, Inc.**, Mishawaka, IN, 574-257-0000, arkosdesign.com

**B** **BBS Architects, Landscape Architects + Engineers**, Patchogue, NY, 631-475-0349, bbsarch.com

**Belmont Freeman Architects**, New York, NY, 212-382-3311, belmontfreeman.com

**Bialosky Cleveland**, Cleveland, OH, 216-752-8750, bialosky.com

**Bostwick Design Partnership**, Cleveland, OH, 216-621-7900, bostwickdesign.com

**Butler Rowland Mays Architects, LLP**, Ballston Spa, NY, 518-885-1255, brmarchitects.com

**C** **Cannon Design**, Irvine, CA, 949-250-1500, cannondesign.com

**CAS Architecture**, Lawrenceville, GA, 678-646-7736, casarc.com

**Cooper Carry**, Atlanta, GA, 404-237-2000, coopercarry.com

**D** **David L. King Architects**, Boston, MA, 617-542-7420, davidkingarchitects.com

**designLAB architects**, Boston, MA, 617-350-3005, designlabarch.com

**DFDG Architecture**, Phoenix, AZ, 602-954-9060, dfdg.com

**DLR Group**, New York, NY, 212-564-8705, dlrgroup.com

**Drumrey Rosane Anderson, Inc.**, Waltham, MA, 617-964-1700, draws.com

**E** **EMC2**, Mesa, AZ, 480-830-3838, emc2architects.com

**Emery & Associates**, Atlanta, GA, 770-414-9099, emeryassoc.com

**F** **FEH Design**, Oconomowoc, WI, 414-708-0112, fehdesign.com

**G** **GBBN**, Cincinnati, OH, 513-241-8700, gbbn.com

**GBBN**, Pittsburgh, PA, 412-345-5005, gbbn.com

**Gensler**, New York, NY, 212-492-1400, gensler.com

**Gresham Smith**, Columbus, OH, 614-221-0678, greshamsmith.com

**Grimm+Parker Architects**, Calverton, MD, 301-595-1000, grimmandparker.com

**Group 4 Architecture, Research + Planning, Inc.**, South San Francisco, CA, 650-871-0709, g4arch.com

**GUND Partnership**, Cambridge, MA, 617-250-6800, GUNDPartnership.com

**H** **H2M architects + engineers**, Melville, NY, 866-970-6535, h2m.com

**Hacker-Architecture + Interior Design**, Portland, OR, 503-227-1254, hackerarchitects.com

**HBM Architects**, Cleveland, OH, 216-241-1100, HBMArchitects.com

**HGA, Inc.**, Milwaukee, WI, 414-278-8200, HGA.com

**I** **ikon.5 architects**, New York, NY, 212-956-2530, ikon5architects.com



The renovated entry of the **Madison Branch**, Lakewood Public Library, OH.

**CREDITS** HBM Architects, architects; photo © 2022 Roger Mastroianni.

**Integrus Architecture**, Spokane, WA, 509-838-8681, integrusarch.com

**J** **Johnson Roberts Associates**, Somerville, MA, 617-666-8585, johnson-roberts.com

**JR Keller LLC Creative Partnerships**, Philadelphia, PA, 267-908-5846, jrkeller.com

**K** **Karin Payson architecture + design**, San Francisco, CA, 415-277-9500, kpad.com

**Kennedy and Violic Architecture**, Boston, MA, 617-442-0800, kvarch.net

**L** **Lamar Johnson Collaborative**, St. Louis, MO, 314-429-1010, theljc.com

**Leers Weinzapfel Associates**, Boston, MA, 617-423-5711, lwa-architects.com

**Line and Space**, LLC, Tucson, AZ, 520-623-1313, lineandspace.com

**LLB Architects**, Worcester, MA, 508-556-4648, llbarch.com

**LWC Inc.**, Dayton, OH, 937-223-6500, lwcinspires.com

**M** **Margaret Sullivan Studio**, New York, NY, 646-687-7923, margaretsullivanllc.com

**Marvel Architects**, New York, NY, 212-616-0420, marveldesigns.com

**McMillan Pazdan Smith Architecture**, Charleston, SC, 843-566-0771, mcmillanpazdansmith.com

**McMillan Pazdan Smith Architecture**, Greenville, SC, 864-242-2033, mcmillanpazdansmith.com

**Miller Boskus Lack Architects**, Fayetteville, AR, 479-443-7121, mbl-arch.com

**MKM architecture + design**, Fort Wayne, IN, 260-422-0783, mkmdesign.com

**Moody Nolan**, Atlanta, GA, 470-480-7590, moodynolan.com

**Moody Nolan**, Columbus, OH, 614-461-4664, moodynolan.com

**Morris Berg Architects**, Charlotte, NC, 704-552-5800, morrisberg.com

**N** **Noll & Tam Architects**, Berkeley, CA, 510-542-2200, nollandtam.com

**O** **OPN Architects**, Cedar Rapids, IA, 319-363-6018, opnarchitects.com

**P** **Perry Dean Rogers**, Boston, MA, 617-423-0100, perrydean.com

**PGAL**, Houston, TX, 713-622-1444, PGAL.com

**Poster Mirto McDonald**, Tucson, AZ, 520-882-6310, pmm.design

**Product Architecture + Design**, Chicago, IL, 773-837-0447, product-architects.com

**Q** **Quinn Evans Architects**, Baltimore, MD, 410-576-0440, quinnevans.com

**Quinn Evans Architects**, Ann Arbor, MI, 734-663-5888, quinnevans.com

**R** **RATIO**, Denver, CO, 303-607-0040, radiodesign.com

**Robert. A. M. Stern Architects**, New York City, NY, 212-967-5100, ramsa.com

**S** **Schwartz/Silver Architects**, Boston, MA, 617-542-6650, schwartzsilver.com

**Siegel & Strain Architects**, Emeryville, CA, 510-547-8092, siegelstrain.com

**Silling Architects**, Charleston, WV, 304-346-0565, silling.com

**StudioGC architecture + interiors**, Chicago, IL, 312-253-3400, studiogc.com

**studioMLA Architects**, Brookline, MA, 617-608-1551, studiomla.com

**Synalovski Romanik Saye, LLC.**, Fort Lauderdale, FL, 954-961-6806, synalovski.com

**T** **The Miller Hull Partnership**, Seattle, WA, 206-682-6837, millerhull.com

**TLM Associates**, Jackson, TN, 731-988-9840, tlmae.com

**TowerPinkster**, Jeffersonville, IN, 812-282-9554, towerpinkster.com

**V** **VIP Architectural Associates**, Syracuse, NY, 315-471-5338, vipstructures.com/architecture

**Vitetta**, Leymoynne, PA, 717-233-1105, vitetta.com

**Voith & Mactavish Architects LLP**, Philadelphia, PA, 215-545-4544, voithandmactavish.com

**VRL Architects Inc.**, Jacksonville, FL, 904-723-3895, vrlarchitects.com

**W** **Warehaus**, York, PA, 717-845-8383, warehausae.com

**Wiemann Lamphere Architects**, Colchester, VT, 802-655-5020, wiemannlamphere.com

**Wier Boerner Allin Architecture**, Jackson, MS, 601-321-9107, wbaarchitecture.com

**Williams Architects**, Itaska, IL, 630-221-1212, williams-architects.com

**WORKac**, New York, NY, 212-228-1333, work.ac

**WRNS Studio**, San Francisco, CA, 415-489-2224, wrnsstudio.com